

BAND INSTRUMENTS

FLUTE



The flute is held to the side. Fingers on both hands are used to close the keys. Air is blown across the embouchure hole.

CLARINET



Fingers on both hands are used to cover tone holes. A reed produces the sound on the mouthpiece. We need many clarinets in band!

ALTO SAX



Fingers on both hands are used to close the keys. A reed produces the sound on the mouthpiece. The sax is much heavier than the clarinet.

TRUMPET



The trumpet has 3 valves. Your lips buzz to produce a sound.

TROMBONE



The trombone has a slide that moves to get the correct pitches. Your lips buzz to produce a sound.

BARITONE



The baritone has the same sound as the trombone but has 3 valves. Your lips buzz to produce a sound.

TUBA



The tuba is the biggest & lowest instrument in the band. It has 3 valves. Your lips buzz to produce a sound.

For further information please contact:

Lisa Phalen:

lphalen@dce.k12.wi.us
715-241-9700 ext. 2425

Brenda Zimmerman:

bzimmerman@dce.k12.wi.us
715-241-9700 ext. 2434

February 27 6:00pm

Rental/Informational Meeting for Band
DCEMS Theater

- ◆ Presentation for parents about instrumental music at DCEMS
- ◆ Held Music will be here to assist you in the rental process
- ◆ Parents can ask band teachers questions about the program and various instruments

“Jump Start” Program

Beginning Band students participate in D.C. Everest Middle School’s “Jump Start” program in the month of August. The purpose of “Jump Start” is to guide the initial assembly of the instrument, learn the basics of sound production and proper care and maintenance of the instrument. Students will be instructed in groups by instrument. This will provide a smooth start to our school year!



Studies have found links between the number of years of band instruction and significantly improved academic achievement as measured by standardized math, science and language tests.

Uoft and ETSU study, 2000

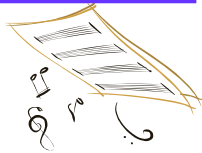
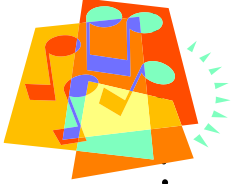
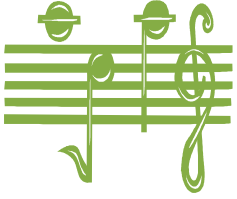
2020-2021

Beginning Band Program

D.C. Everest Middle School

Check out our website for more info:

www.dcemsbands.weebly.com



D.C. Everest Middle School Beginning Band Program

www.dcemsband.weebly.com

All D.C. Everest Middle School students will need to select a music class. We strongly encourage students to enroll in a Beginning Band class in 6th grade since this is a skill that is developed over time! Students who begin instrumental classes at a later age are sometimes less successful than those who have an earlier start. Opportunity for instrumental instruction begins in the 6th grade and continues through the 12th grade. Students will find the continual progress rewarding and the benefits of participating in an instrumental program apply to many areas of your child's development!

Can students participate in band and sports?

Yes! Because band classes meet during the school day, there is no conflict with sports or other after school activities.

How do we register for band?

Simply select **Beginning Band** on the Middle School Course Selection and choose the appropriate instrument that you wish to play. It is that simple!!



Will I need to practice? Yes, to succeed you need to practice your instrument an average of 10 minutes/day. Playing a musical instrument is a skill that needs to be developed. Regular practice habits strengthen and develop muscles, coordination, and skills necessary to master any instrument.



What about concerts?

The 6th grade band performs three evening concerts during the year. Concerts are required. Concerts are a major and unique part of the BAND curriculum as all the basic skills are "put to the test." They strengthen independence and fundamental musical concepts. Concerts last less than an hour and are fun for both students and parents. They are an aesthetic experience that cannot be duplicated.

What if I want to play percussion?

Students that are interested in percussion should sign up for a band instrument. Students will start on that instrument and learn music reading skills with everyone else. After the 1st quarter of next school year, "auditions" will be held for those students that are in band and are interested in percussion. There are a limited number of openings for percussion. All rental money will transfer to a percussion kit if selected.



If you have a financial concern, please don't hesitate to contact us! We will strive to make arrangements to allow your child to participate.

Are instruments difficult to play?

Every person is unique. One person might find an instrument very easy to play while another instrument might be difficult. Most people can play any instrument, but some physical characteristics, such as extremely small hands or very crooked teeth, may make some instruments more difficult.

ALL BAND STUDENTS NEED A GOOD WORKING INSTRUMENT!

Renting an Instrument:

We strongly suggest renting an instrument from a music store for beginners. The middle school will host an Instrumental Rental Night on February 27 at 6pm. At that time you will be able to meet with a Heid Music representative to learn about various rental programs and rent an instrument for the start of the school year. Because of their size, the tuba and baritone are rented through the band department for a yearly fee, rather than the monthly rental at a music store.

